

SOFT DOWN STAY TYPE SDS-100-TV & SDS-C100-TV

Please follow these instructions carefully.

- Please read this instruction sheet carefully for proper installation and operation. Incorrect installation and improper use of the product may damage the unit or cause injury.
- This stay is designed for furniture or lightweight door and is equipped with a damping function.
- Sugatsune guarantees the quality of this product as for all its parts. It cannot however guarantee the final assembly as a whole.
- This product was manufactured and delivered with our utmost care. Should you however find any defect, please contact your dealer immediately.
- Sugatsune warrants that this product is free from defect for a period of one(1) year from the date of delivery.
- Sugatsune liability is limited to the replacement of this product by a similar one free of defect. In no case dose this extend to the replacement of the installation or the cabinet as a whole.
- Please keep these instructions at hand for future use.
- Sugatsune cannot be held liable for any damage or injury caused by improper use or one different than the one this product was designed for.

CAUTIONS : Any failure to observe the following precautions may result in personal injury or damage to the cabinet.

- ❗ Make sure that installation position and specifications are followed. Unsuitable installation position may damage the mechanism when in case two stays are used together.
- ❗ Make sure that the arm of the stay is parallel with the side panel of the cabinet.
- ❗ To avoid serious damage and/or injury, do not attempt to disassemble the body of SDS stay.
- ❗ Applicable working temperature is between 5-35 °C and the opening/closing speed may be differed in temperature change. The door opening/closing speed may be too slow or fast out of applicable working temperature range. (5-35 °C)
- ❗ Additional supporting stay may be needed when any objective or any enforcement is put on the door in opening position.
- ❗ Please avoid forced opening beyond the opening angle, and using excessive force while opening the door.
- ❗ SDS-C100-TV has catch function, which keeps the door closed. Depending on the number of stays used or door size/weight etc., the opening enforcement will be differed.
- ❗ SDS-100-TV does not have a catch function. Separated parts with catch/latch function are required to keep the door closed.
- ❗ For SDS-C100-TV, in order to maintain the catch function integrated, the recommendable door height in usage is 150-300 mm.
- ❗ This product is developed as a flap stay. Do not use it for other purposes.
- ❗ Please make sure to check the operation after installation.

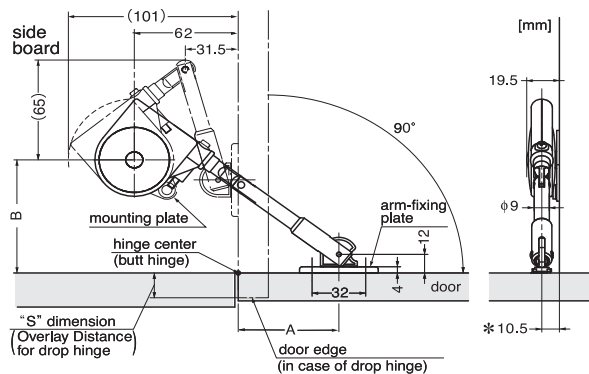
PLATE POSITION FOR INSTALLATION

Depending on the type of hinges used, the position of mounting plate and arm-fixing plate should be fixed as indicated below.

The distance of A, B are measured from the center of the butt hinge.

In the case of a drop hinge, dimension A indicates the door end and dimension B the top surface of the bottom board.

Please contact our customer service when other type of hinges are used.



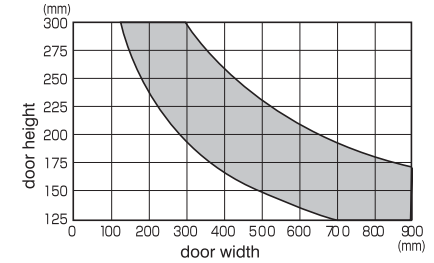
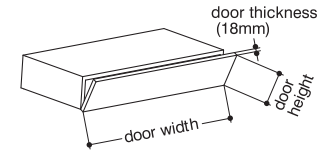
	A	B
Butt Hinge (one axis)	60	73
Drop Hinge (SDH-001)	49+S	62
Drop Hinge (SDH-P)	47+S	60

S = Overlay coverage by Drop Hinge



THE DIMENSION OF THE FLAP

SOFT DOWN STAY must be used taking the size of the door into consideration. The graph indicates the usable range when using one SDS stay. (Note) The graph shown to the right is in case of a general wooden door of 18mm thickness. (specific gravity approx. 0.5)



APPLICABLE TORQUE MOMENT

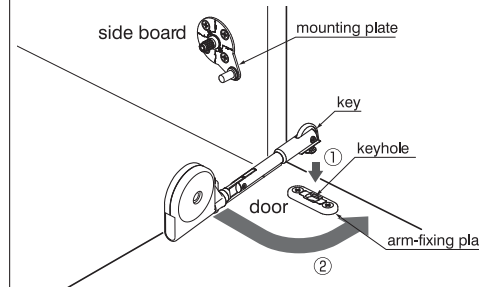
Check the torque moment of your door or lid by using the following formula.

- 1 piece use : 1/2 of Door Height [m] × Weight [kg] × 9.8 = 0.49 ~ 1.18 [N·m] (5.0 ~ 12.0 [kgf·cm])
- 2 pieces use : 1/2 of Door Height [m] × Weight [kg] × 9.8 = 0.98 ~ 2.36 [N·m] (10.0 ~ 24.0 [kgf·cm])

HOW TO INSTALL AND ADJUST

Install the mounting plate and arm fixing plate with the enclosed screws at the designated places.

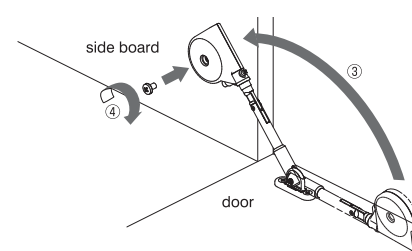
HOW TO INSTALL



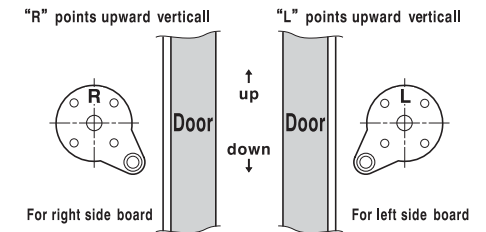
In order to avoid any gap in the installation, we recommend that you pre-drill the holes for the mounting plate and arm bracket.

2 pieces usage will be recommended for the door width over 900 mm.

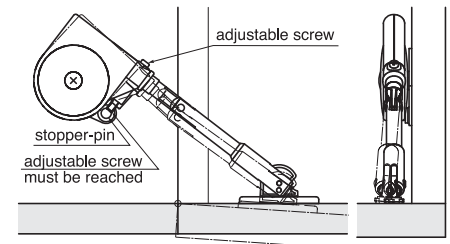
* While turning the main body ensure to hold the arm along with the main body.



INSTALLATION FOR MOUNTING PLATE



ADJUSTMENT



At maximum door opening angle, make the adjustment of arm-fold in straight by adjustable screw of main body on stopper-pin.

SUGATSUNE KOGYO CO., LTD.
Tokyo, JAPAN
Phone: +81 (0)3 3866 2260
E-mail: export@sugatsune.co.jp

SUGATSUNE EUROPE GmbH
Düsseldorf, GERMANY
Phone: +49 211 53812900
E-mail: info@sugatsune.eu

SUGATSUNE SHANGHAI Co., LTD.
Shanghai, CHINA
Phone: +86 21 3632 1858
E-mail: lamp@sugatsune.com.cn

SUGATSUNE AMERICA, INC.
California, USA
Phone: +1 310 329 6373
E-mail: sales@sugatsune.com

SUGATSUNE KOGYO (UK) LTD.
Reading, UK
Phone: +44 118 9272 955
E-mail: sales@sugatsune.co.uk

SUGATSUNE KOGYO INDIA PRIVATE LIMITED
Mumbai, INDIA
Phone: +91 22 28314490/91
E-mail: sales@sugatsune.in

Guangzhou, CHINA
Phone: +86 20 6639 3552
E-mail: lamp@sugatsune.com.cn

Chicago, USA
Phone: +1 312 461 1081
E-mail: chicagoshowroom@sugatsune.com