


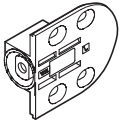
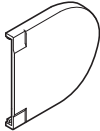

LAMP® HG-JHM16 DAMPER HINGE INSTALLATION INSTRUCTIONS (For wood use.)

Read instructions thoroughly before installation.

Caution :

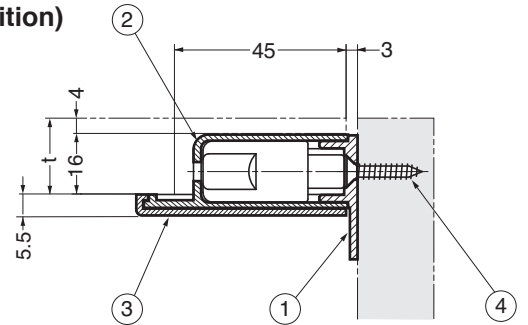
- For indoor use only.
- Not water resistant.
- Do not use in high temperature environment.

PARTS :

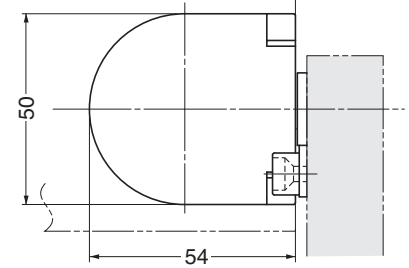
No.	Part Name	Qty.	
①	Mounting Plate	L/R 1 each	
②	Damper Bracket	L/R 1 each	
③	Cover	2	
④	Screw (4x20)	12	

Installation Diagram

(Lid, closed position)



(Lid, 90° open position)



Item	Cover color	Damper Torque N·m (kgf·cm)	Damper color (bottom)
HG-JHM16-34BL	black	2 ~ 3.4 (20.4 ~ 34.7)	green
HG-JHM16-34WT	white		
HG-JHM16-50BL	black	3.4 ~ 5 (34.7 ~ 51.0)	black
HG-JHM16-50WT	white		

Maximum Torque Moment Calculations

$$T = m \times 9.8 \times L$$

T : Maximum lid torque (N·m)

m : Lid weight (kg)

L : Distance from rotation centre to lid centre of gravity (m)

$$L = D/2 - A$$

D : Lid length (m)

A : Length of lid back from rotation centre (m)

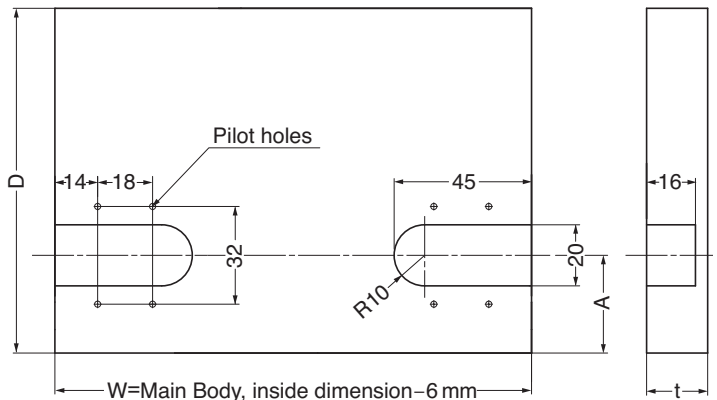
(Dimension A = 30~36 mm)

(Calculation example)

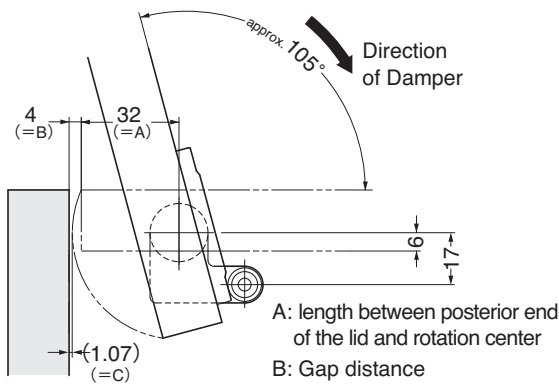
When D = 0.43 m, A = 0.032 m, m = 2.78 kg

$$T = 2.78 \times 9.8 \times (0.43/2 - 0.032) \div 4.99 \text{ N}\cdot\text{m}$$

Lid Preparation



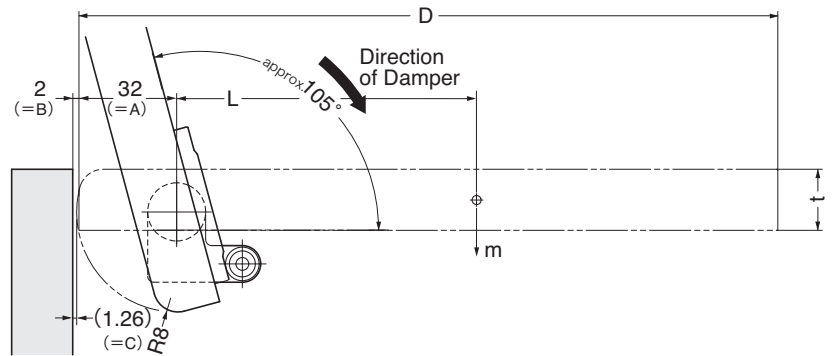
Standard Installation Specifications



- Above example shows the lid of 20 mm thickness.
- Make sure that the gap C when the lid is open is 1 mm or more.

Installation Specifications for Rounded Lid Edge

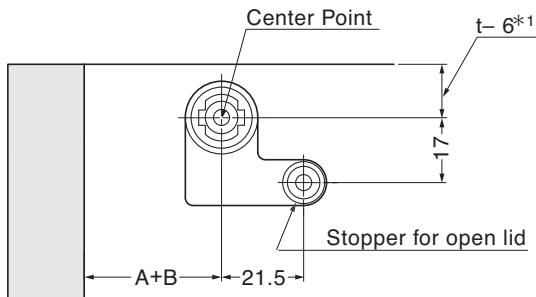
Round the back edge of the lid to reduce the gap (B).



Installation

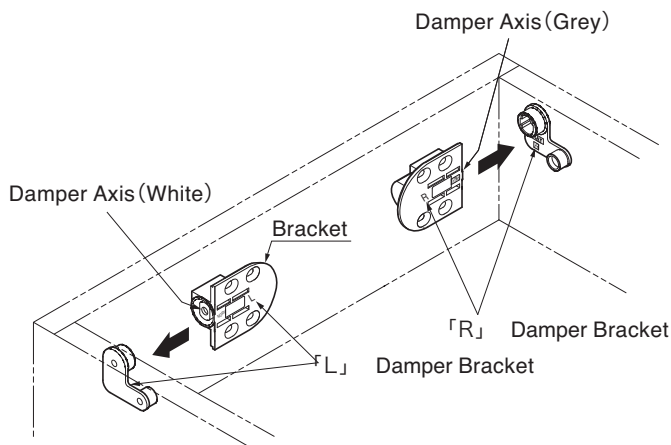
1. Mounting Plate Installation

- (1) Please drill 10 mm hole of 2.5 mm diameter as shown.
- (2) Fix location of mounting plate ① with provided screws. ④



*1 : Dimensions when the upper part of lid and side panel are flash.

2. Bracket Assembly

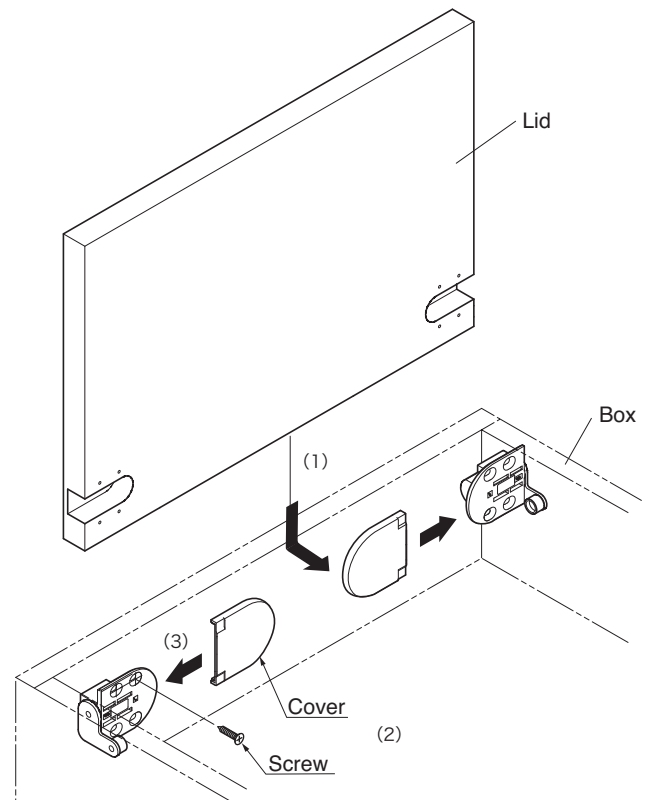


Damper Bracket 「L」 : Damper Axis Color – White
Damper Bracket 「R」 : Damper Axis Color – Grey

3. Lid and Bracket Cover Installation

(Refer to diagram below.)

- (1) Insert the lid vertically and mount onto brackets. ②
- (2) Fix with provided screws. ④
Close and open lid to check working damper.
- (3) Slide covers onto brackets.



SUGATSUNE KOGYO CO.,LTD.
Tokyo, JAPAN
Phone: +81 (0)3 3866 2260
E-mail: export@sugatsune.co.jp

SUGATSUNE EUROPE GmbH
Düsseldorf, GERMANY
Phone: +49 211 53812900
E-mail: info@sugatsune.eu

SUGATSUNE SHANGHAI Co., LTD.
Shanghai, CHINA
Phone: +86 21 3632 1858
E-mail: lamp@sugatsune.com.cn

SUGATSUNE AMERICA, INC.
California, USA
Phone: +1 310 329 6373
E-mail: sales@sugatsune.com

SUGATSUNE KOGYO (UK) LTD.
Reading, UK
Phone: +44 118 9272 955
E-mail: sales@sugatsune.co.uk

SUGATSUNE KOGYO INDIA PRIVATE LIMITED
Mumbai, INDIA
Phone: +91 22 28314490/91
E-mail: sales@sugatsune.in

Guangzhou, CHINA
Phone: +86 20 6639 3552
E-mail: lamp@sugatsune.com.cn

Chicago, USA
Phone: +1 312 461 1081
E-mail: chicagoshowroom@sugatsune.com

ISO9001(Japan Offices and Sugatsune America) and ISO14001(Chiba Production division and Logistics center), certified.

2016.09 1027-1