

LAMP® PRECAUTIONS FOR FD30-MG MAGNET LOWER GUIDE



Caution

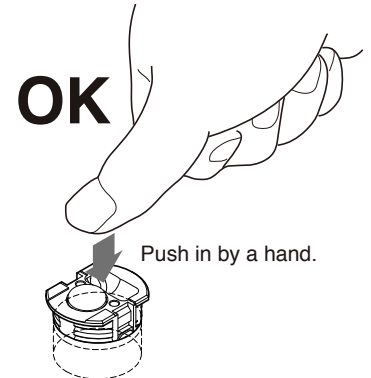
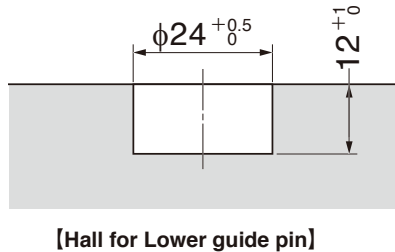
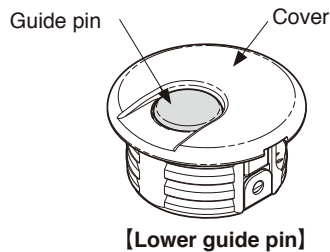
If the following instructions are not followed, it may result in damage of the product.

Prohibited actions.

Actions that must be done.

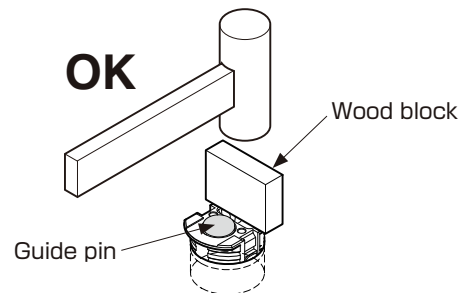
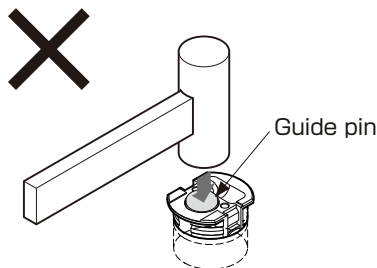
❗ Drill a hole for Lower guide pin as specified.

If the hole is too small, you may damage the guide when pushing it in.



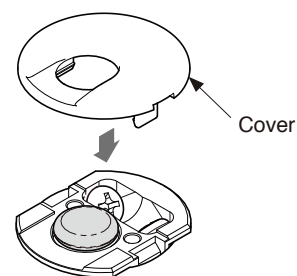
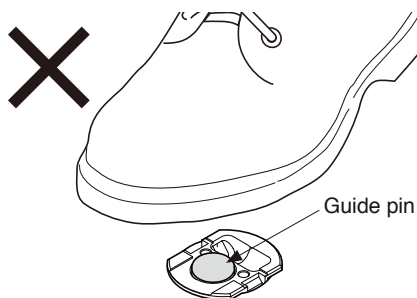
⊘ Do not hit the Guide pin.

The guide pin is likely to be damaged if hit with a hammer. If you have difficulties inserting the pin, please use a wood block.



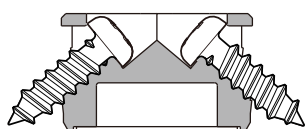
❗ Put the Cover.

The Lower guide pin can be damaged if not protected by the Cover. Do not step on the guide pin during installation, and put on the Cover at once.



❗ Fix with two screws.

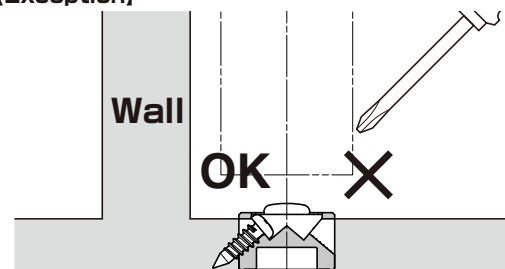
OK



❗ Make sure to fix the guide with two screws.

* Tighten the screws so that the heads do not protrude from the top surface. If the screw heads protrude, the Cover cannot be put properly.

[Exception]



If the Lower guide pin is located nearby a wall, you may fix it by one screw only.