


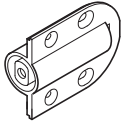
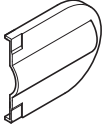

LAMP® HG-JHM20 DAMPER HINGE INSTALLATION INSTRUCTIONS (For wood use.)

Read instructions thoroughly before installation.

Caution :

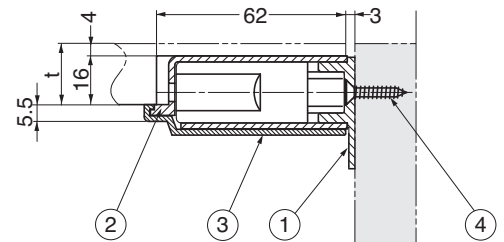
- For indoor use only.
- Not water resistant.
- Do not use in high temperature environment.

PARTS :

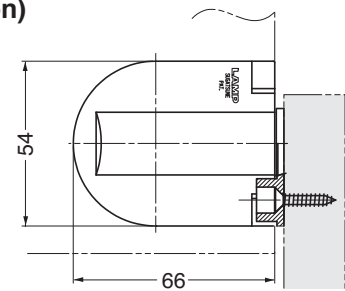
No.	Part Name	Qty.	
①	Mounting Plate	L/R 1 each	
②	Damper Bracket	L/R 1 each	
③	Cover	2	
④	Screw (4x20)	12	

Installation Diagram

(Lid, closed position)



(Lid, 90° open position)



Item	Cover color	Damper Torque N·m (kgf·cm)
HG-JHM20-80BL	black	6 ~ 8
HG-JHM20-80WT	white	(61.2 ~ 81.6)

Maximum Torque Moment Calculations

$$T = m \times 9.8 \times L$$

T : Maximum lid torque (N·m)

m : Lid weight (kg)

L : Distance from rotation centre to lid centre of gravity (m)

$$L = D/2 - A$$

D : Lid length (m)

A : Length of lid back from rotation centre (m)

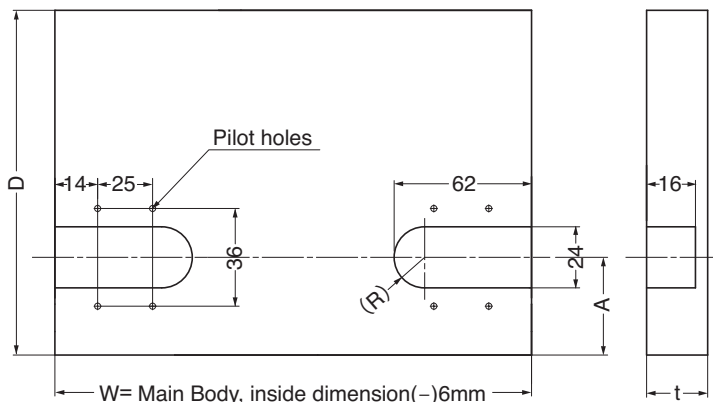
(Dimension A = 34~38mm)

(Calculation example)

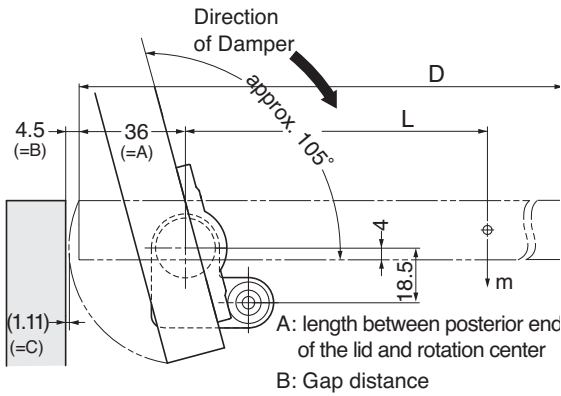
When D = 0.45 m, A = 0.036 m, m = 4.32 kg

$$T = 4.32 \times 9.8 \times (0.45 / 2 - 0.036) \doteq 8 \text{ N} \cdot \text{m}$$

Lid Preparation



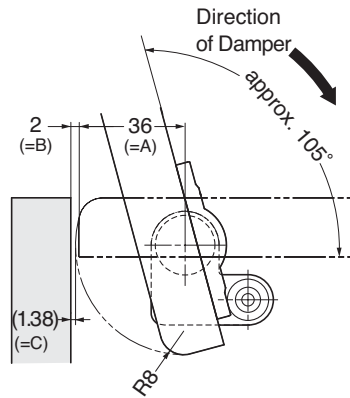
Standard Installation Specifications



- Above example shows the lid of 20mm thickness.
- Make sure that the gap C when the lid is open is 1mm or more.

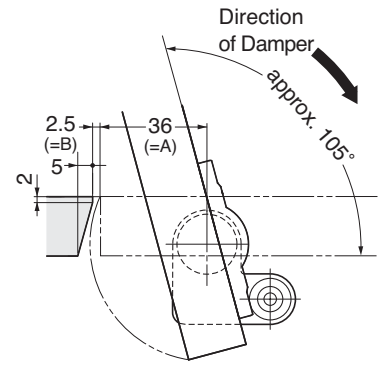
Rounded Lid Edge

Rounded back edge reduces the gap (B).



Tilted cut

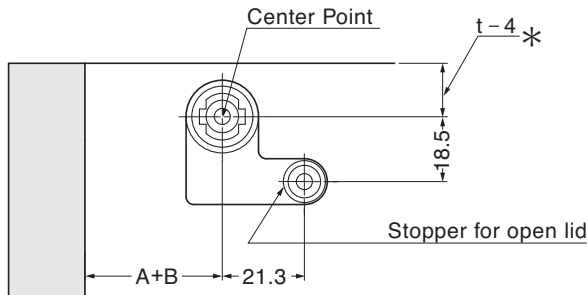
Tilted cut reduces the gap (B).



Installation

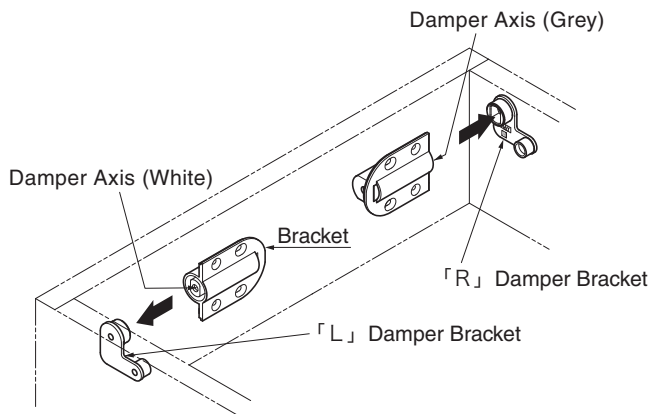
1. Mounting Plate Installation

- (1) Please drill 10mm hole of 2.5mm diameter as shown.
- (2) Fix location of mounting plate ① with provided screws ④



* : Given dimension when the upper part of lid and side panel are flash.

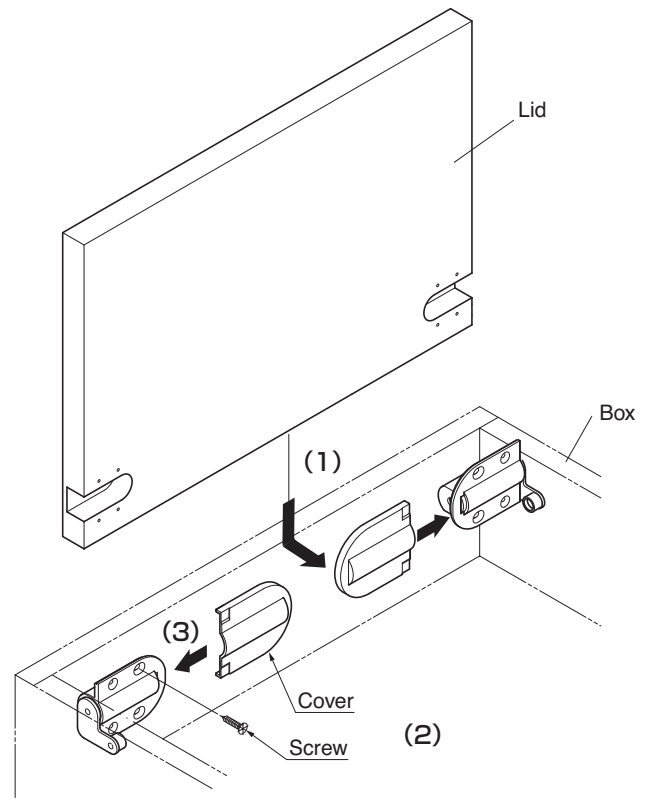
2. Bracket Assembly



Damper Bracket 「L」 : Damper Axis Color – White
Damper Bracket 「R」 : Damper Axis Color – Grey

3. Lid and Bracket Cover Installation

- (Refer to diagram below.)
- (1) Insert the lid vertically and mount onto brackets. ②
 - (2) Fix with provided screws ④
Close and open lid to check working damper.
 - (3) Slide covers onto brackets.



SUGATSUNE KOGYO CO.,LTD.
Tokyo, JAPAN
Phone: +81 (0)3 3866 2260
E-mail: export@sugatsune.co.jp

SUGATSUNE EUROPE GmbH
Düsseldorf, GERMANY
Phone: +49 211 53812900
E-mail: info@sugatsune.eu

SUGATSUNE SHANGHAI Co., LTD.
Shanghai, CHINA
Phone: +86 21 3632 1858
E-mail: lamp@sugatsune.com.cn

SUGATSUNE AMERICA, INC.
California, USA
Phone: +1 310 329 6373
E-mail: sales@sugatsune.com

SUGATSUNE KOGYO (UK) LTD.
Reading, UK
Phone: +44 118 9272 955
E-mail: sales@sugatsune.co.uk

SUGATSUNE KOGYO INDIA PRIVATE LIMITED
Mumbai, INDIA
Phone: +91 22 28314490/91
E-mail: sales@sugatsune.in

Guangzhou, CHINA
Phone: +86 20 6639 3552
E-mail: lamp@sugatsune.com.cn

Chicago, USA
Phone: +1 312 461 1081
E-mail: chicagoshowroom@sugatsune.com